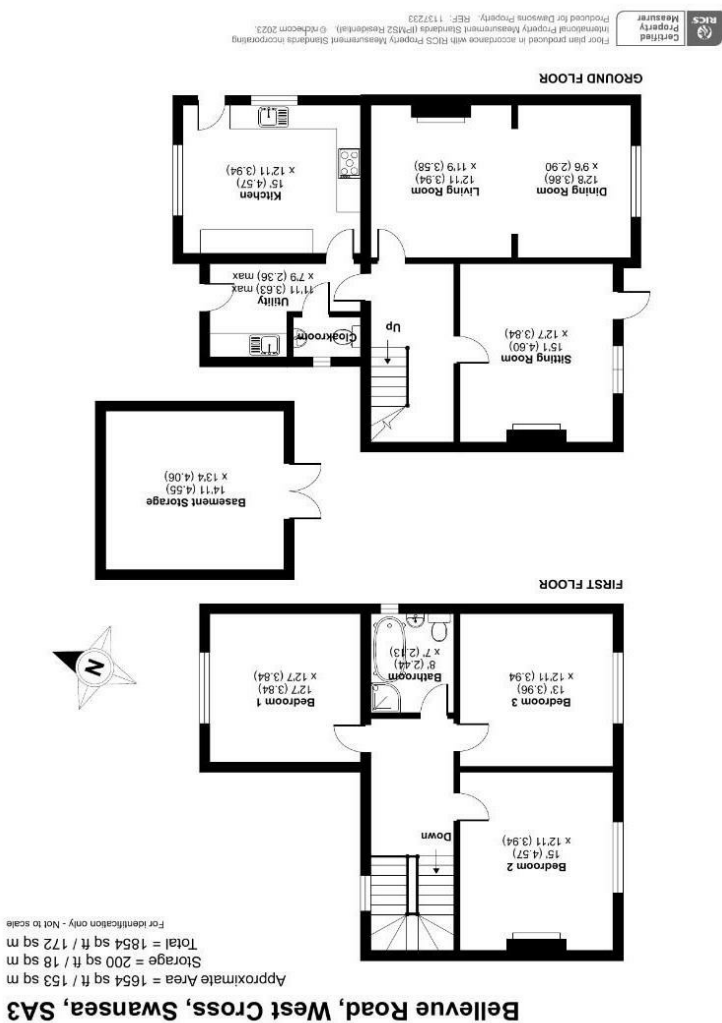




AREA MAP



FLOOR PLAN



GENERAL INFORMATION

Nestled in a prime position, this charming semi-detached home offers breathtaking panoramic sea views of Swansea Bay, including the iconic Mumbles Pier and Lighthouse. Perfectly combining traditional charm with modern comforts, the property features three generously sized double bedrooms on the first floor, along with a modern fitted bathroom stylishly designed with contemporary fixtures and fittings. The ground floor boasts a spacious kitchen breakfast room, ideal for family gatherings and casual dining, with modern appliances and a welcoming atmosphere. The sitting room, with its traditional fireplace and patio doors, leads to an elevated deck seating area, perfect for al fresco dining, morning coffee, or unwinding while watching the sunset. An additional lounge diner offers stunning bay views, making it perfect for entertaining guests or enjoying quiet evenings. Outside, the rear patio area provides sea views, access to basement storage area and a path leads to a lower lawn garden planted with mature shrubs, creating a serene outdoor retreat. Driveway parking at the front of the property ensures ease of access and security. This exceptional home offers a unique opportunity to experience coastal living at its finest, with unparalleled views and a perfect blend of traditional charm and modern convenience. Don't miss the chance to make this stunning property your own and wake up every day to the beauty of Swansea Bay. EPC D

FULL DESCRIPTION

Entrance

Sitting Room
15'1 x 12'7 (4.60m x 3.84m)

Hallway

Living Room
12'11 x 11'9 (3.94m x 3.58m)

Dining Room
12'8 x 9'6 (3.86m x 2.90m)

Utility
11'11 max x 7'9 max (3.63m max x 2.36m max)

Cloakroom

Kitchen
15' x 12'11 (4.57m x 3.94m)



Stairs To First Floor

Landing

Bedroom 1
12'7 x 12'7 (3.84m x 3.84m)

Bedroom 2
15' x 12'11 (4.57m x 3.94m)

Bedroom 3
13' x 12'11 (3.96m x 3.94m)

Bathroom

Basement Storage
14'11 x 13'4 (4.55m x 4.06m)

Tenure
Freehold

Council Tax Band
F

Services
Mains gas, electric and water.
The current seller broadband is Cable via Sky. Please refer to Ofcom checker for further information.
The current sellers have advised there are no known restrictions or issues with mobile coverage. Please refer to Ofcom checker for further information.

